

# STARTING DOWN THE ROAD TOWARD ZERO WASTE

---

Municipal and community efforts to turn waste into jobs in Newark, NJ



# Why Zero Waste in Newark?

- Newark has a LOT of material
  - Covanta: 2,800 tons MSW per day
  - DART: 2,650 tons MSW per day
  - Lemcor: 630 tons MSW per day
  - Evergreen; Waste Management; SIMS Metal Management: C&D, plastics, glass, metal
- Newark needs less pollution and more jobs
  - Unemployment: Almost 15 percent
  - Child poverty: 43 percent
  - Child asthma: twice the county average



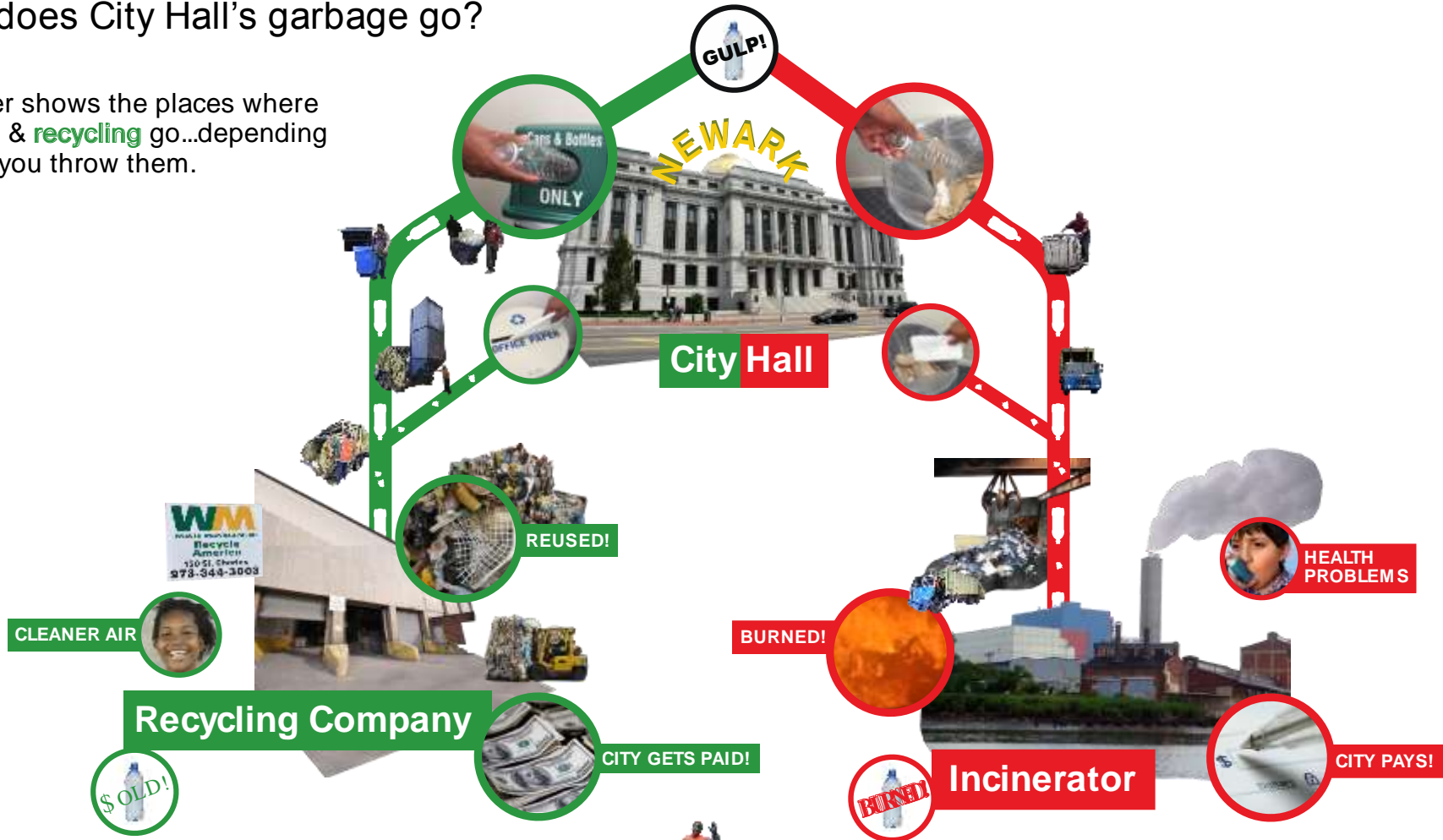
# Early Municipal Efforts

- Learn about Zero Waste
- Commit to Zero Waste strategy in Sustainability Action Plan
- Begin with municipal facilities
- Support Community Pilot Projects
- Spell out savings and revenue
- Study working models
- Introduce new policies
- Scale up using new business models
- Institutionalize progress



# Where does City Hall's garbage go?

This poster shows the places where your **trash** & **recycling** go...depending on where you throw them.



If we recycle it, we get paid & breathe easier.



If we burn it, we pay & breathe it in.





# Composting, E-Waste, Food Recovery Summit, Re-Used Material Production, Zero Waste Events Guide, Recycling Education, Earth Day, Waste Site Tours, Restaurant Waste Audit

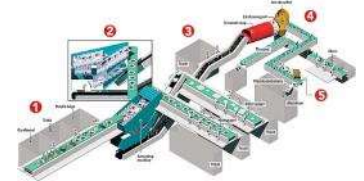


# Next Phase Municipal Efforts

- Policies:
  - Recycled content & Buy Local procurement
  - Construction & Demolition certification
  - Zero Waste Venue/Event Permit
- Business Pilot Projects
  - Recycling and food recovery at Business Improvement District level
  - Waste audit, reduction, and re-use challenges with universities and hospitals
  - Newark manufacturers' re-used material project
- Adaptation of larger-scale working models
  - Social enterprise development (St Vincent de Paul of Lane County)
  - Food recovery for urban agriculture (Growing Power, Milwaukee)

# Challenges

- Basic Recycling: Staffing, Education, Enforcement
- New Contracts & Procedures: Buy-in across agencies
- Large-scale behavior change: Residents, businesses, institutions
- Investment in infrastructure for materials diversion and recovery





# Next Steps

- City waste disposal & recycling contracts
- Social enterprise development
- Materials Re-use Depot
- Zero Waste Policy Adoption
- Zero Waste Plan Development



A photograph of the Newark skyline at sunset, with buildings and a bridge reflected in the water. The sky is a mix of orange, yellow, and grey clouds.

**Presentation to the New York State chapter of the Solid  
Waste Association of North America**

**December 3, 2013**

**Stephanie Greenwood  
Sustainability Director  
City of Newark, NJ**

**[greenwoods@ci.newark.nj.us](mailto:greenwoods@ci.newark.nj.us)**

**973.733.8916**